

 **Zymfentra**<sup>TM</sup>  
infliximab-dyyb | subcutaneous  
120 mg/mL

PREFILLED PEN

HOW TO USE  
ZYMFENTRA<sup>TM</sup>

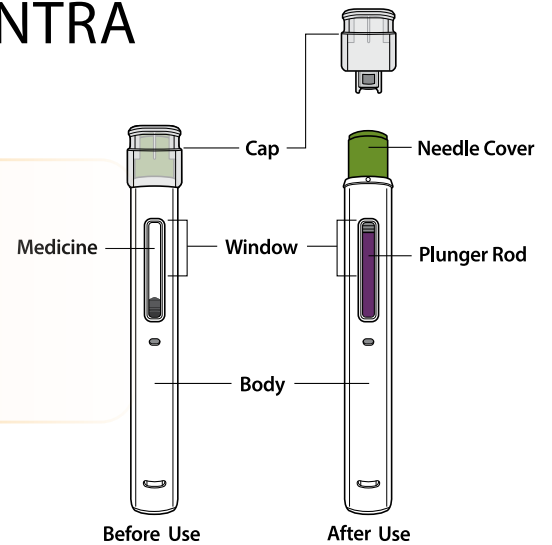


Please read the [Medication Guide](#) for key information on serious side effects.  
For more information please see complete [Instructions for Use](#).

# HOW TO USE ZYMFENTRA

## BEFORE YOU BEGIN

Use the prefilled pen only if you have received appropriate training from your healthcare provider and make sure you have a detailed plan for how often you will need to give an injection. Do not reuse the pen.

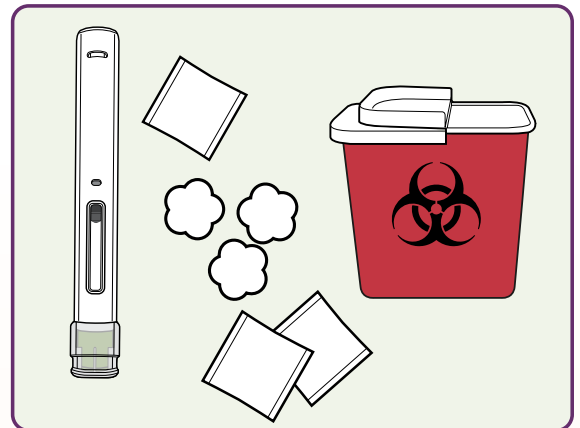


## PREPARE FOR THE INJECTION

### 1. GATHER YOUR SUPPLIES

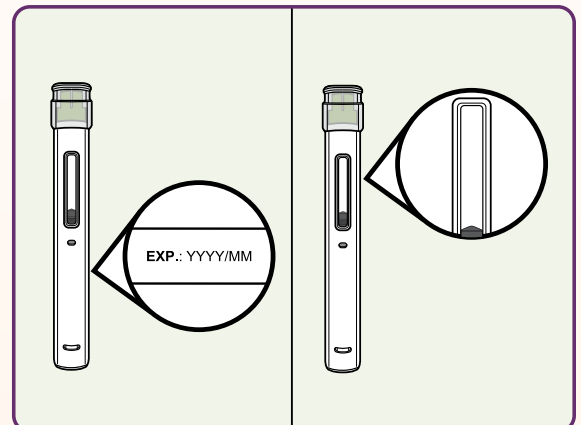
- Find a clean, flat, well-lit surface such as a table or countertop
- Remove the carton containing the prefilled pen from the refrigerator. If needed, the pen may also be stored at room temperature at 68°F to 77°F (20°C to 25°C) for up to 14 days
- Remove the pen from the carton
- Items needed:
  - ZYMFENTRA™ Prefilled Pen
  - Alcohol swab
  - Cotton ball or gauze\*
  - Adhesive bandage\*
  - Sharps disposal container/household plastic container\*

\*Not included in carton.



### 2. INSPECT THE PEN AND MEDICINE

- DO NOT use the pen if:
  - It is cracked or visibly damaged
  - The expiration date has passed
  - The liquid is discolored or contains particles (the liquid should be clear and colorless to a pale brown)
  - It has been stored at room temperature for longer than 14 days
- Do not shake the pen at any time
- It is normal to see air bubbles inside the liquid

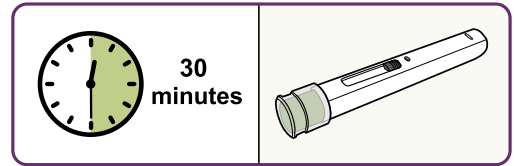


Please read the [Medication Guide](#) for key information on serious side effects. For more information please see complete [Instructions for Use](#).

# PREPARE FOR THE INJECTION continued

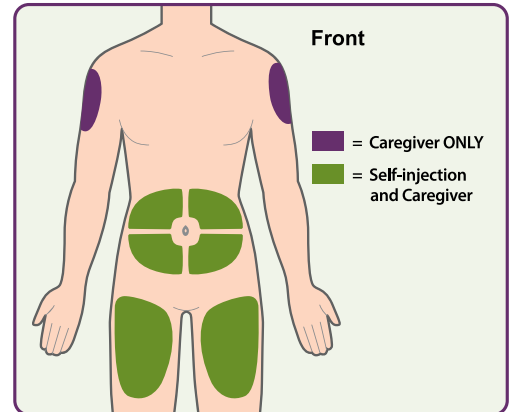
## 3. WAIT 30 MINUTES

- If refrigerated, leave the pen at room temperature for 30 minutes to allow it to warm up naturally
- Do not use a microwave, stovetop, or other heat sources to warm the pen



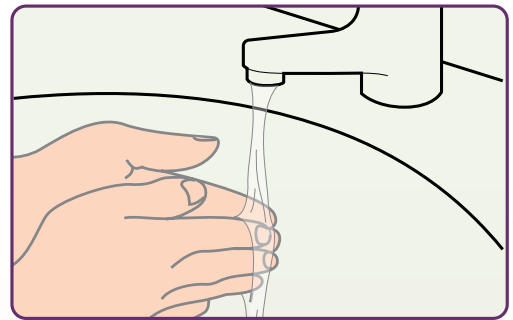
## 4. CHOOSE AN INJECTION SITE

- Recommended injection sites:
  - The front of the thighs
  - The abdomen
  - The outer area of the upper arm, ONLY if given by a caregiver
- Rotate the injection site each time you give an injection
- Each new injection site should be an inch or more away from the previous site
- Do not inject into the 2-inch area surrounding your belly button (navel)
- Do not inject into skin that is tender, damaged, bruised, or scarred



## 5. WASH YOUR HANDS AND CLEAN THE INJECTION SITE

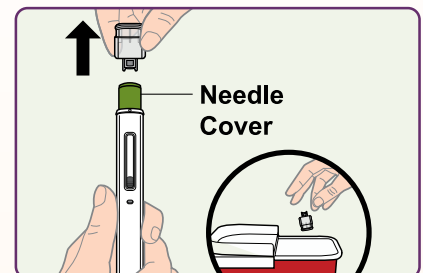
- Wash your hands with soap and water and dry them fully
- Clean the injection site using the alcohol swab included in your carton
- Let your skin dry before injecting
- Do not blow on or touch the injection site again before giving the injection



# GIVE THE INJECTION

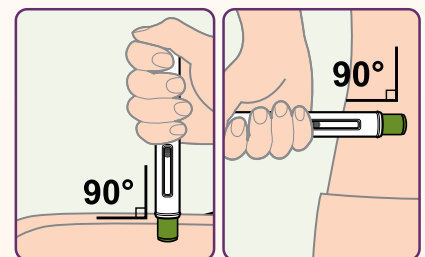
## 6. REMOVE THE CAP

- Remove the cap from the pen by pulling the cap straight off
- Be careful not to touch the needle cover
- Throw away the cap in your plastic container



## 7. PLACE THE PEN

- Hold the pen so that you can see the window
- Without pinching or stretching the skin, place the pen over the injection site at a 90-degree angle



Please read the [Medication Guide](#) for key information on serious side effects. For more information please see complete [Instructions for Use](#).

 **Zymfentra**<sup>™</sup>  
infliximab-dyyb | subcutaneous  
120 mg/mL

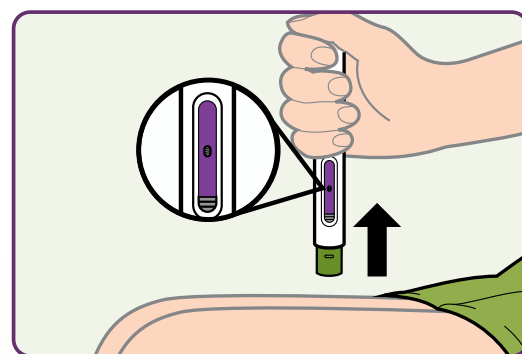
## 8. START THE INJECTION

- Press the pen firmly against the skin
- When the injection starts, you will hear the first of two loud “click” sounds. The plunger rod will begin to fill the window
- Keep holding the pen and listen for the second “click” sound
- After you hear the second click, continue to hold the pen and count slowly for at least 5 seconds



## 9. REMOVE THE PEN

- Check that the window is filled with the plunger completely
- Lift the pen from the injection site
- If the plunger rod is not filling the window fully, you did not receive your full dose. Do not reuse the pen in this case. Call your healthcare provider immediately
- Gently press a cotton ball, gauze, or adhesive bandage over the injection site. Be sure not to rub the injection site



## AFTER THE INJECTION

### 10. DISPOSE OF THE PEN

- Put the used pen in an approved sharps disposal container immediately after use. Do not recap the pen
- If you do not have an approved sharps disposal container, you may use a household container that is:
  - Made of heavy-duty plastic
  - Able to close with a tight-fitting, puncture resistant-lid
  - Properly labelled to warn of hazardous waste inside the container
- When your container is almost full, dispose of it in accordance with local requirements. For specific information about sharps disposal in your area, visit: [fda.gov/safesharpsdisposal](https://www.fda.gov/safesharpsdisposal)
- Keep the pen and sharps disposal container away from children



Please read the [Medication Guide](#) for key information on serious side effects. For more information please see complete [Instructions for Use](#).